



Warehouse Offer on Lease

For details call **9764442260**

email us at **raj_baldewa@yahoo.com**



Site location on Google

Google Location :

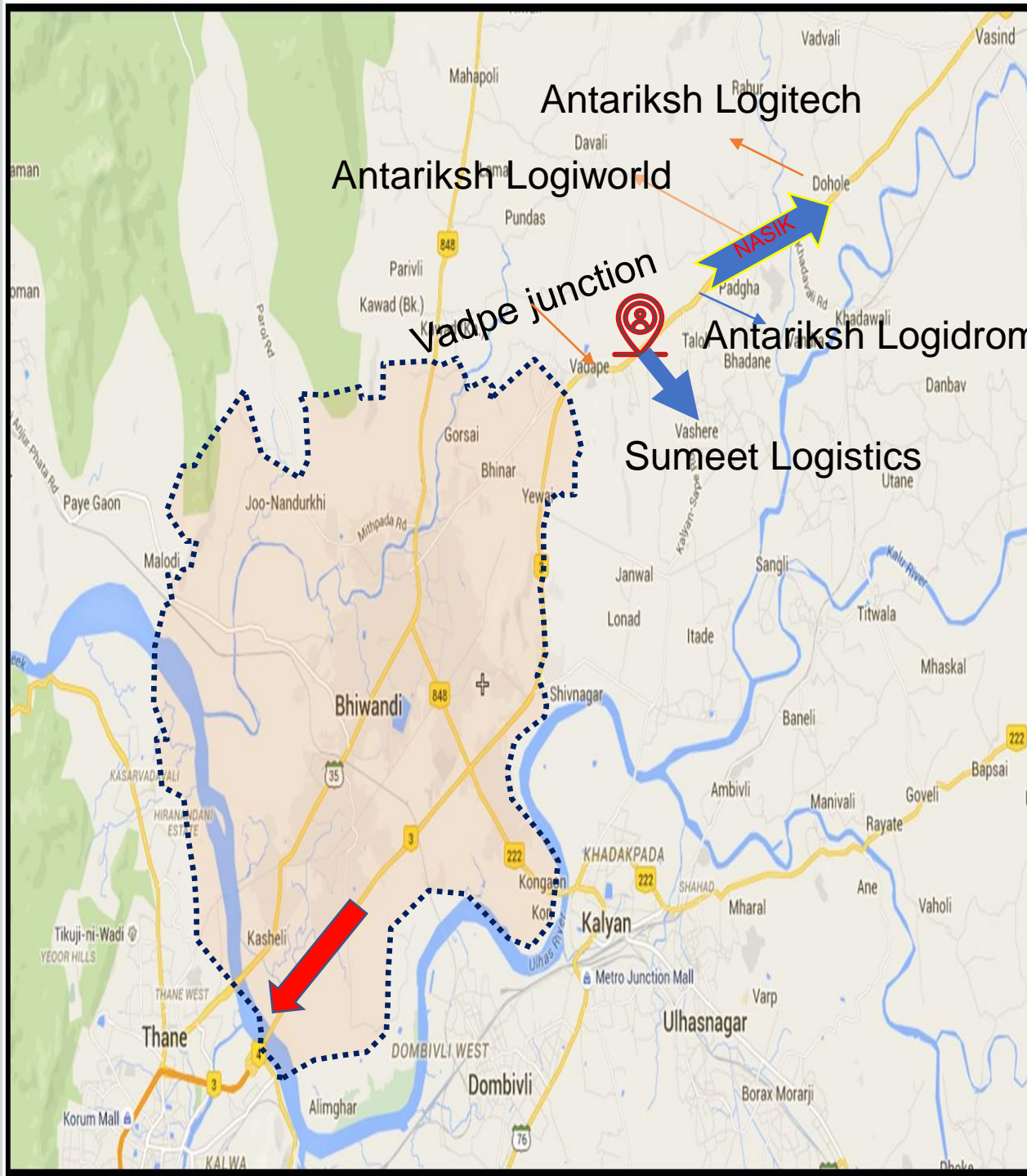
<https://goo.gl/maps/SHNQBDnwEAU2>

19°20'40.4"N 73°08'11.8"E

19.344547, 73.136625

Sumeet Logistics & Industrial Park

Kukse-Borivali, Opp.Rajdhani Petrol Pump,
Mumbai-Nashik Highway (NH-3),
Bhiwandi (Thane)- 421101,
Maharashtra, India.



Antariksh Logidrom, Amney Introduction



Antariksh Group has been into the field of warehousing, and residential development since decade.

We have ready to move in warehouses & also built to suit option warehouse from 25,000 Sq. ft. to 4 Lakhs Sq. ft. on lease basis any extent / 4 location on Mumbai-Nashik Highway, Bhiwandi.

Please do visit our website, Youtube link and also kindly find our Company profile, request to let us know if you have any requirements and our team shall be glad to be associated with you and your esteem organization.

As far as new developments of Antariksh Logidrom, we have already completed phase 1 & phase 2 of around 25 lakh. sq. ft. adding another 10Lk sq. ft. in third phase by 2021

Antariksh Leasing Services

Raj Baldewa

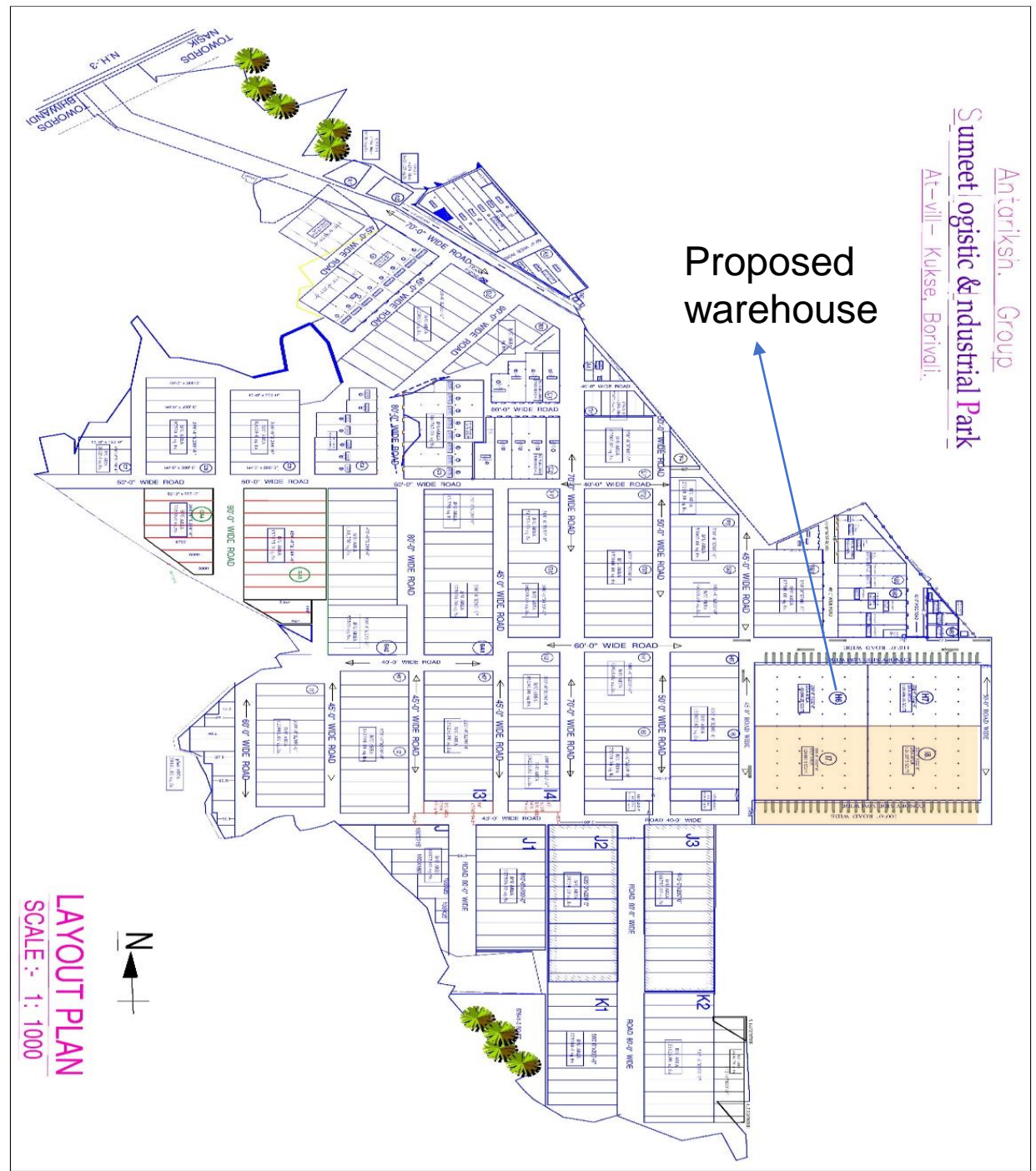
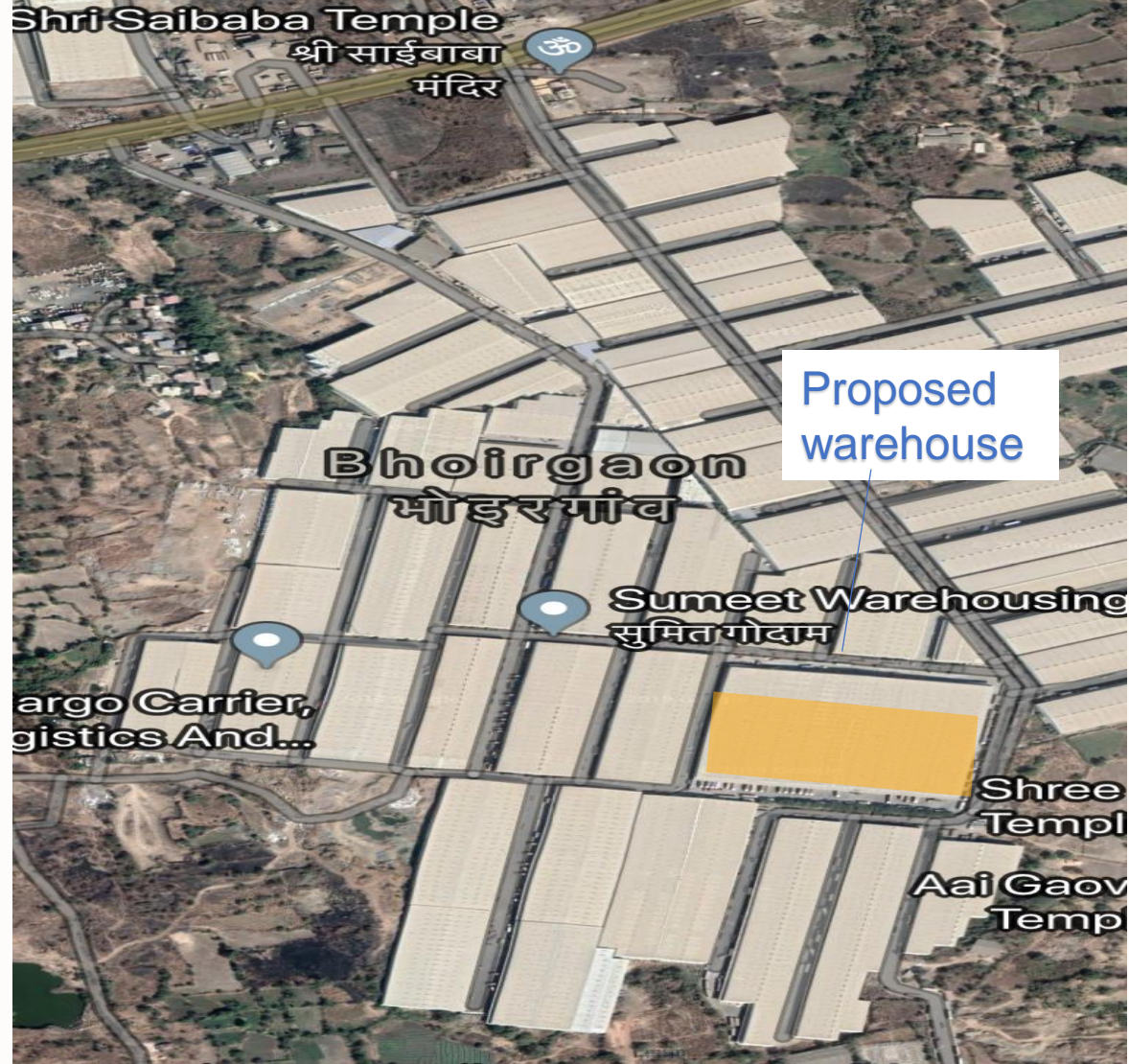
9764442260



Sumeet Logistics , Kukse Layout



Google view



Building No 17 18 Ext. Room plan

Warehouse Area :- 124000 +124000 Sq. Ft.
(Chargeable Area)



Warehouse specification

- Side height- 40 ft. and center height- 50 ft. clear
- 5% of the roof area is covered with skylight
- Fire hydrent system and fire Noc
- Flooring- Trimix floor with load bearing capacity of 5 ton per Sq. Mtr
- Dock- for docking
- Road- 90 ft. wide road on front side
- Canopy- 3 mtr. though the length above dock
- Full functioning Washroom
- Gated complex
- Rest room for Drivers out side building

Commercial proposal

S. No.	Particulars	Details
1	Storage	Non- Chemical storage
2	License fee payable to Ant ariksh Logitech LLP	Basic rental-Rs.16/- per Sq. Ft per month on chargeable Area Maintenance- Rs.2/- per Sq. Ft per month
3	Services Tax/GST	To be borne by the Licensee, wherever applicable
4	License fee payable	Monthly in advance on or before 7 th of every month
5	Period of Lease	9 years lease
6	Commencement date	<u>Ready</u>

Commercial proposal

9	Lock-in Period	5 years
10	Escalation	5% every year on License Fee
11	Sanctioned Electricity Load	Antariksh assist for electricity connection from Torrent Power Ltd.
12	Vacation Notice	3 Calendar months after Lock-In period.
13	Electricity wiring	To be done by Licensee
14	Stamp Duty & Registration	To be borne equally by both party
16	Offer validity	➤ Till availability of warehouse

For more details **9764442260**

email us at **raj_baldewa@yahoo.com**

Thank you!

A close-up photograph of a hand holding a black marker, writing the words 'Thank you!' in a cursive script on a white surface. The marker is positioned at the end of the word 'you!', with the exclamation point being the most recent stroke.